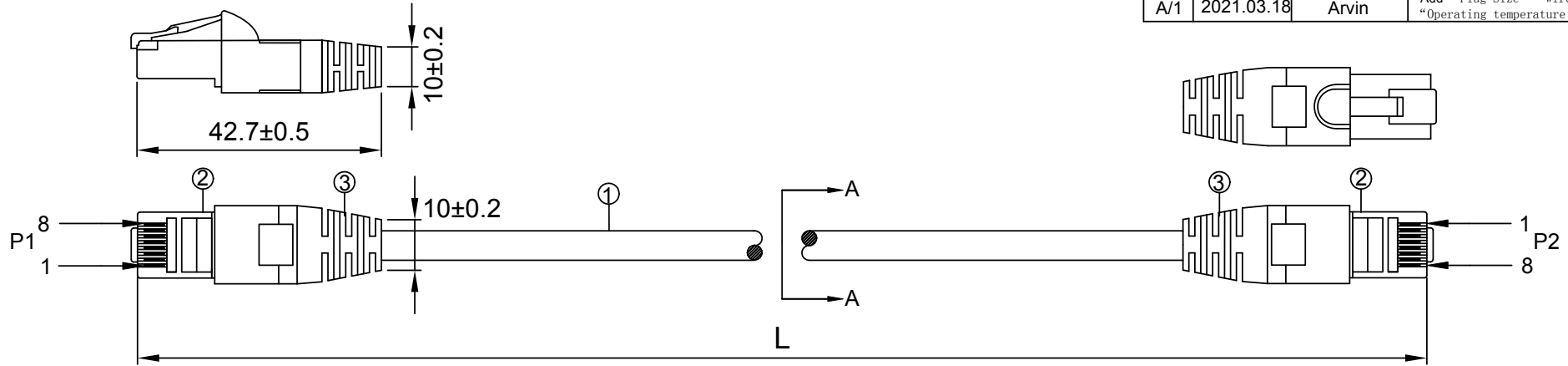


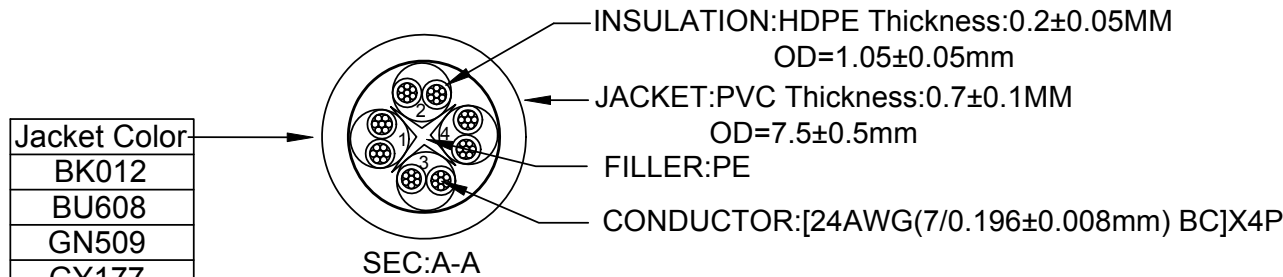
NOTE: ALL MATERIAL COMPLIANT ROHS STANDARD

| REVISION INFORMATION |            |             |   |
|----------------------|------------|-------------|---|
| Rev.                 | Rev. Date  | Modified By | Brief Description                                       |
| A/0                  | 2017.09.21 | LM          | NEW   |
| A/1                  | 2021.03.18 | Arvin       | Add "Plug Size" "Wire printing" "Operating temperature" |



INK MARKING <FP2046> :YFC CAT6A UTP 10 GIGABIT ETHERNET PATCH CABLE ISO/IEC 11801 & EN 50288 & ANSI/TIA-568.2-D & IEC 332.1 ▲ 24AWGX4P TYPE CMX(UL) E164469-XX

Operation Temperature:-20°C~+60°C  
conductor resistance:92↓(Ω/Km) at 20°C



| Jacket Color |
|--------------|
| BK012        |
| BU608        |
| GN509        |
| GY177        |
| OR307        |
| RD220        |
| PU720        |
| RD210        |
| WH928        |
| YE406        |

|              |             |
|--------------|-------------|
| orange 1     | green 2     |
| white/orange | white/green |
| blue 3       | brown 4     |
| white/blue   | white/brown |

| PINOUT |              |    |
|--------|--------------|----|
| P1     | WIRE         | P2 |
| 1      | WHITE/ORANGE | 1  |
| 2      | ORANGE       | 2  |
| 3      | WHITE/GREEN  | 3  |
| 6      | GREEN        | 6  |
| 5      | WHITE/BLUE   | 5  |
| 4      | BLUE         | 4  |
| 7      | WHITE/BROWN  | 7  |
| 8      | BROWN        | 8  |

| L(ft) | T(inch) | T(%)  | L(ft) | T(inch) | T(%)  |
|-------|---------|-------|-------|---------|-------|
| 0.5   | ±0.6    | 10%   | 15    | ±3.15   | 1.75% |
| 1     | ±1.2    | 10%   | 20    | ±4      | 1.67% |
| 1.5   | ±1.2    | 6.67% | 25    | ±4      | 1.33% |
| 2     | ±1.2    | 5%    | 30    | ±6      | 1.67% |
| 3     | ±1.2    | 3.33% | 35    | ±6      | 1.43% |
| 4     | ±1.2    | 2.5%  | 40    | ±6      | 1.25% |
| 5     | ±1.2    | 2%    | 50    | ±6      | 1.0%  |
| 6     | ±1.2    | 1.67% | 75    | ±6      | 0.67% |
| 7     | ±2      | 2.38% | 100   | ±6      | 0.5%  |
| 8     | ±2      | 2.08% | 125   | ±6      | 0.4%  |
| 9     | ±2      | 1.85% | 150   | ±6      | 0.33% |
| 10    | ±2      | 1.67% | 175   | ±6      | 0.29% |
| 12    | ±2      | 1.39% | 200   | ±6      | 0.25% |

|                |                  |   |
|----------------|------------------|---|
| DRAWN BY Arvin | DATE: 2021/03/18 | DESCRIPTION: LAN PATCH C6A UTP 24AWG 4P |
| CHECKED BY YB  | SHEET 1 of 1     | ITEM NO. 10075XX 10076XX                |
| APPROVED BY CQ | SCALE 1:1        | REV. 01 UNIT:mm                         |

|     |           |                            |      |      |
|-----|-----------|----------------------------|------|------|
| ③   | MOLD      | PVC YU-02                  | A/R  | Kg   |
| ②   | PLUG      | 8P8C 50U RJ45              | 2    | PCS  |
| ①   | CABLE     | CAT.6A UTP PVC 24AWG*4P BC | A/R  | M    |
| NO. | PART NAME | SPECIFICATION DESCRIPTION  | QT'Y | UNIT |

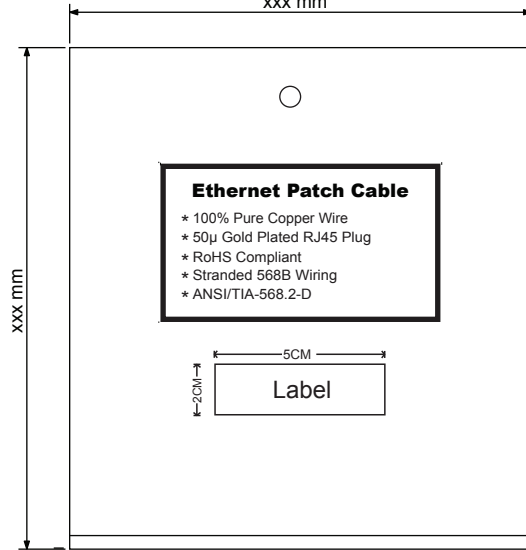
NOTE: CARTON MATERIAL MUST BE A=A

REVISION INFORMATION

| Rev. | Rev. Date | Modified By | Brief Description |
|------|-----------|-------------|-------------------|
|      |           |             |                   |

Front

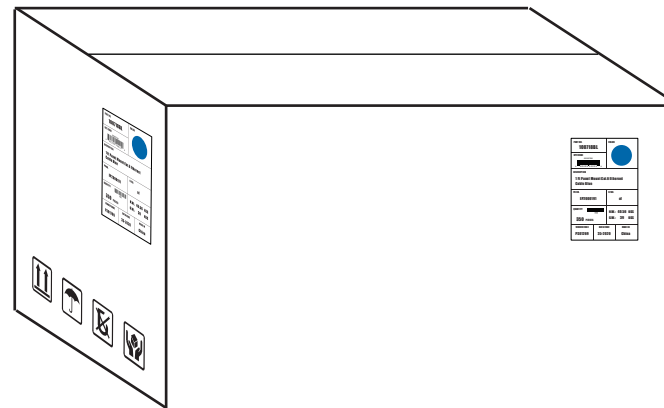
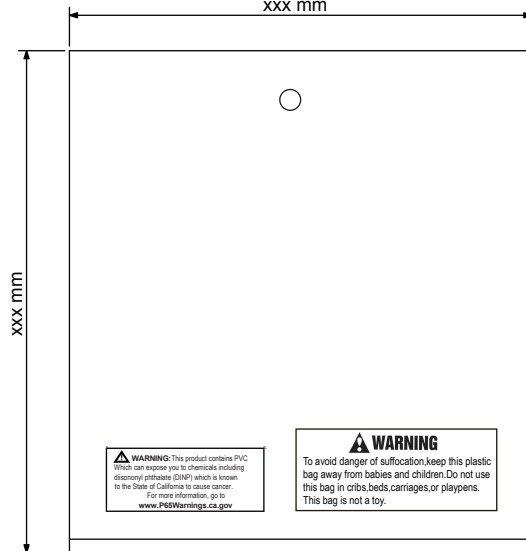
xxx mm



| PE BAG SIZE(INCH) | PART NO. | length/FT | CARION SIZE(INCH) | Q'TY | G.W(LBS) |
|-------------------|----------|-----------|-------------------|------|----------|
| 6.89x7.48         | 100751   | 1         | 15.75x15.75x9.06  | 300  | 25.65    |
| 6.89x7.48         | 100752   | 2         | 15.75x15.75x9.06  | 300  | 23.11    |
| 6.89x9.06         | 100753   | 3         | 15.75x15.75x7.87  | 120  | 18.48    |
| 6.89x9.06         | 100754   | 4         | 15.75x15.75x9.06  | 120  | 22.66    |
| 6.89x9.06         | 100755   | 5         | 15.75x15.75x7.87  | 100  | 22.44    |
| 7.87x9.45         | 100756   | 6         | 15.75x15.75x6.69  | 80   | 21.12    |
| 7.87x9.45         | 100757   | 7         | 15.75x15.75x7.87  | 80   | 23.98    |
| 7.87x9.45         | 100758   | 10        | 15.75x15.75x9.06  | 80   | 32.56    |
| 9.25x10.63        | 100759   | 15        | 15.75x15.75x7.87  | 40   | 24.22    |
| 9.25x10.63        | 100760   | 20        | 15.75x15.75x7.87  | 30   | 23.76    |
| 9.25x10.63        | 100761   | 25        | 15.75x15.75x9.06  | 25   | 28.86    |
| 9.25x10.63        | 100762   | 35        | 18.11x11.81x10.63 | 30   | 38.94    |
| 9.25x10.63        | 100762   | 35        | 16.54x16.54x9.84  | 30   | 38.94    |
| 9.25x11.81        | 100763   | 50        | 15.75x15.75x9.84  | 20   | 37.18    |
| 9.25x11.81        | 100764   | 75        | 18.50x17.13x9.84  | 20   | 52.36    |

Back

xxx mm



|                |                     |   |
|----------------|---------------------|---|
| DRAWN BY :FP   | DATE:<br>2021.03.24 | DESCRIPTION:<br>C6A UTP 24AWG PVC Molding |
| CHECKED BY :ZL | SHEET 1of2          | ITEM NO.                                  |
| APPROVED BY    | SCALE 1 : 1         | REV. 00                                   |
|                | UNIT:mm             |   |